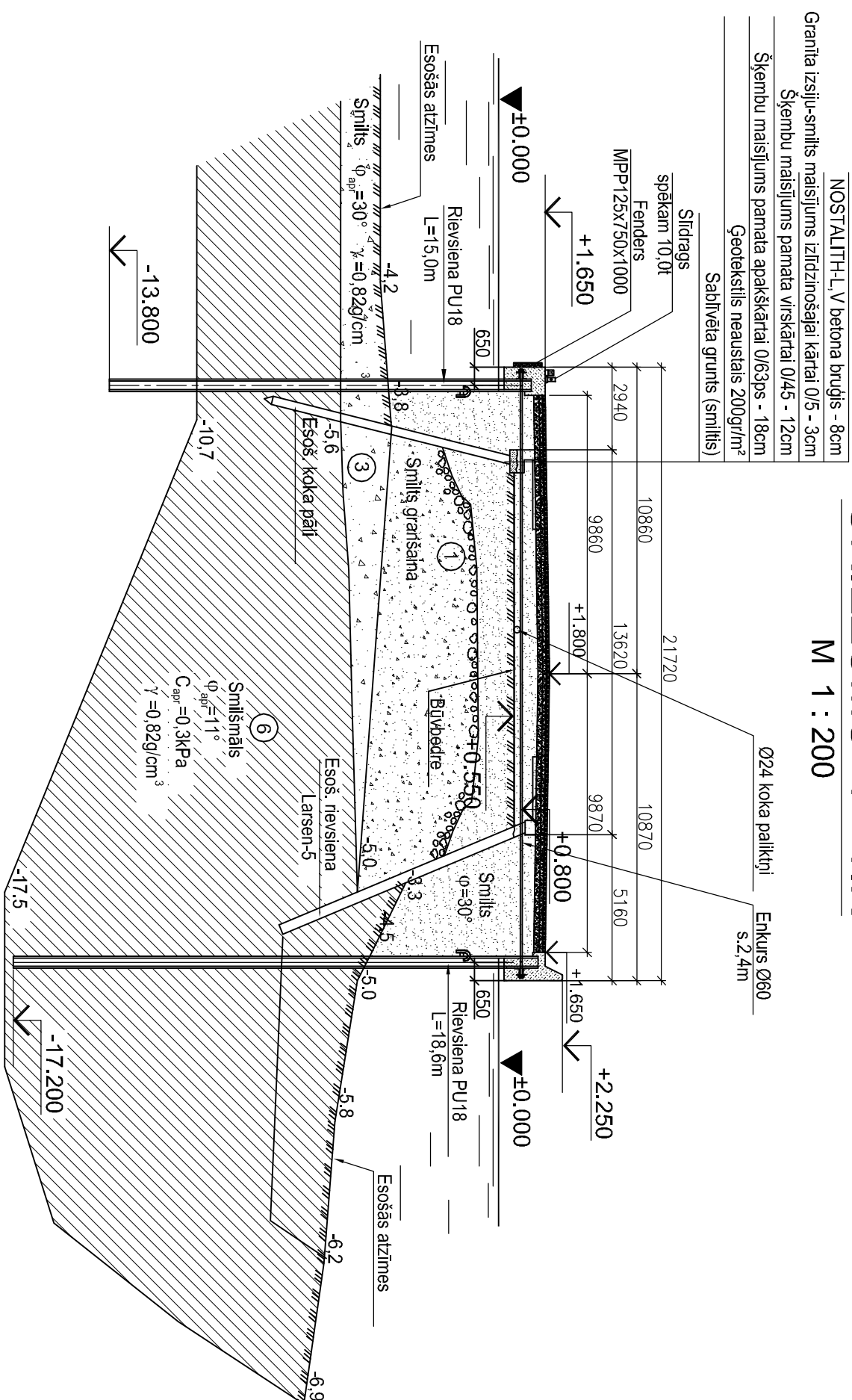


Rietumu mols

GRIEZUMS 1 - 1.K

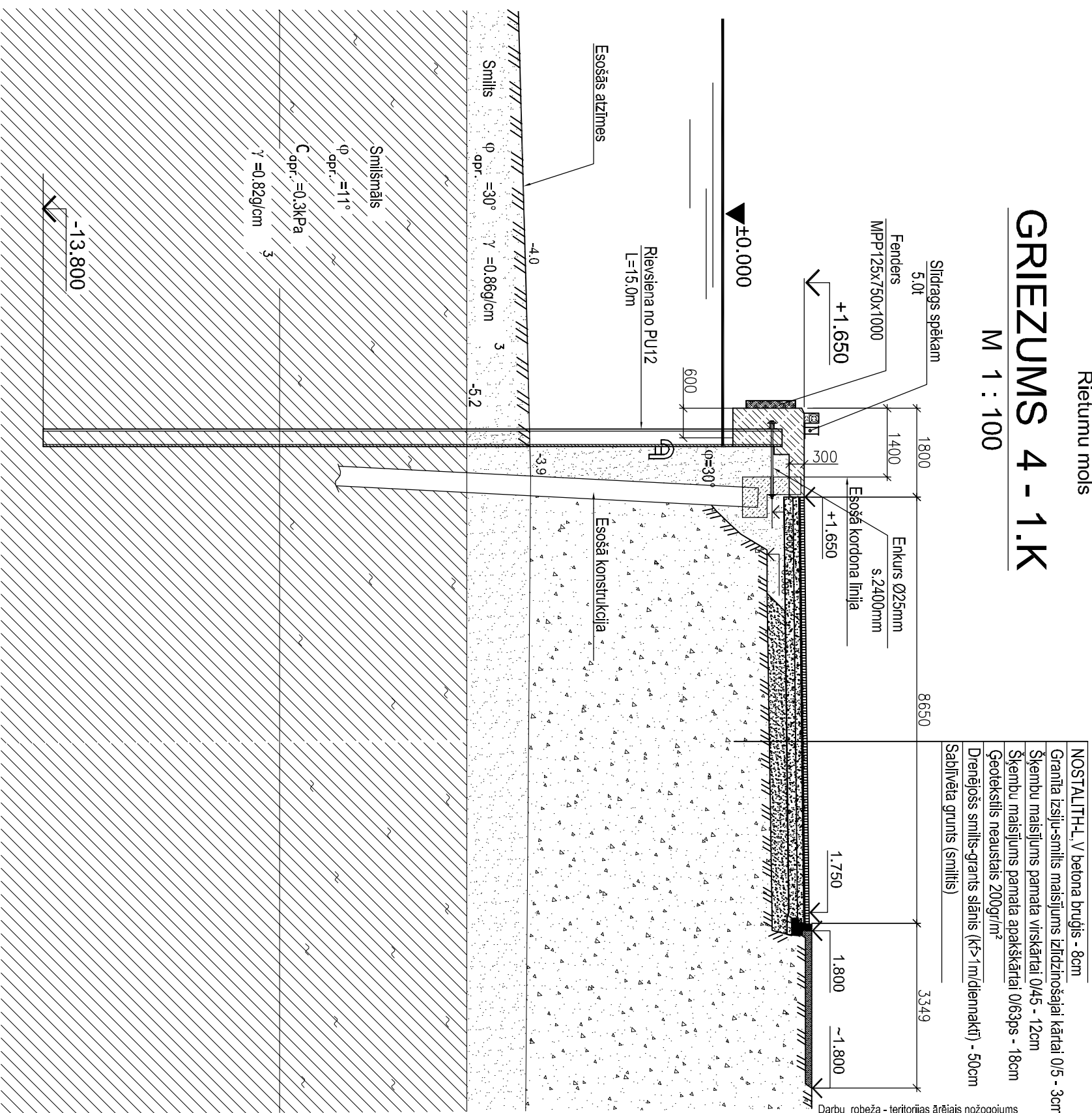
M 1 : 200



Rietumu mols

GRIEZUMS 4 - 1.K

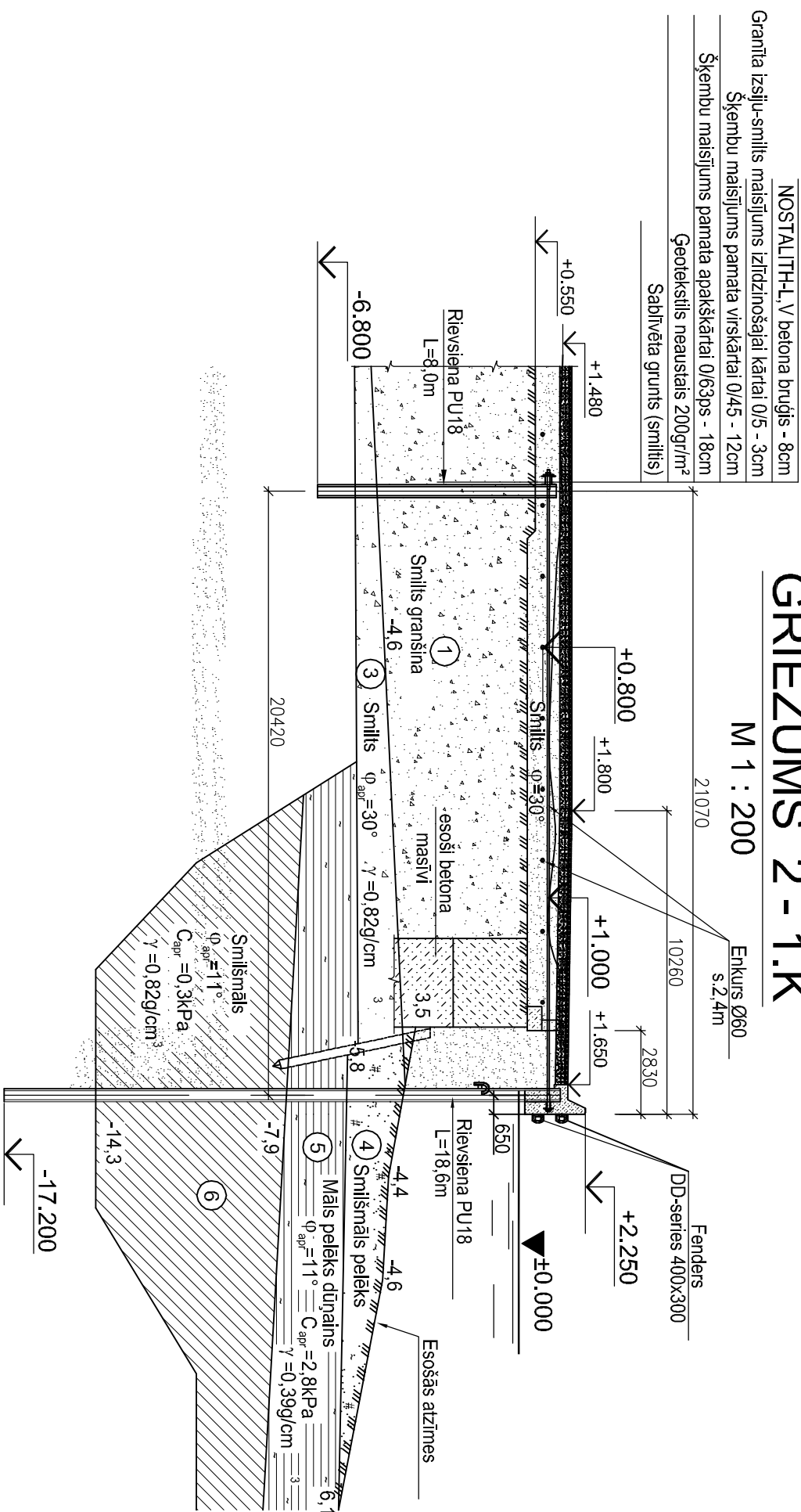
M 1 : 100



Rietumu mols

GRIEZUMS 2 - 1.K

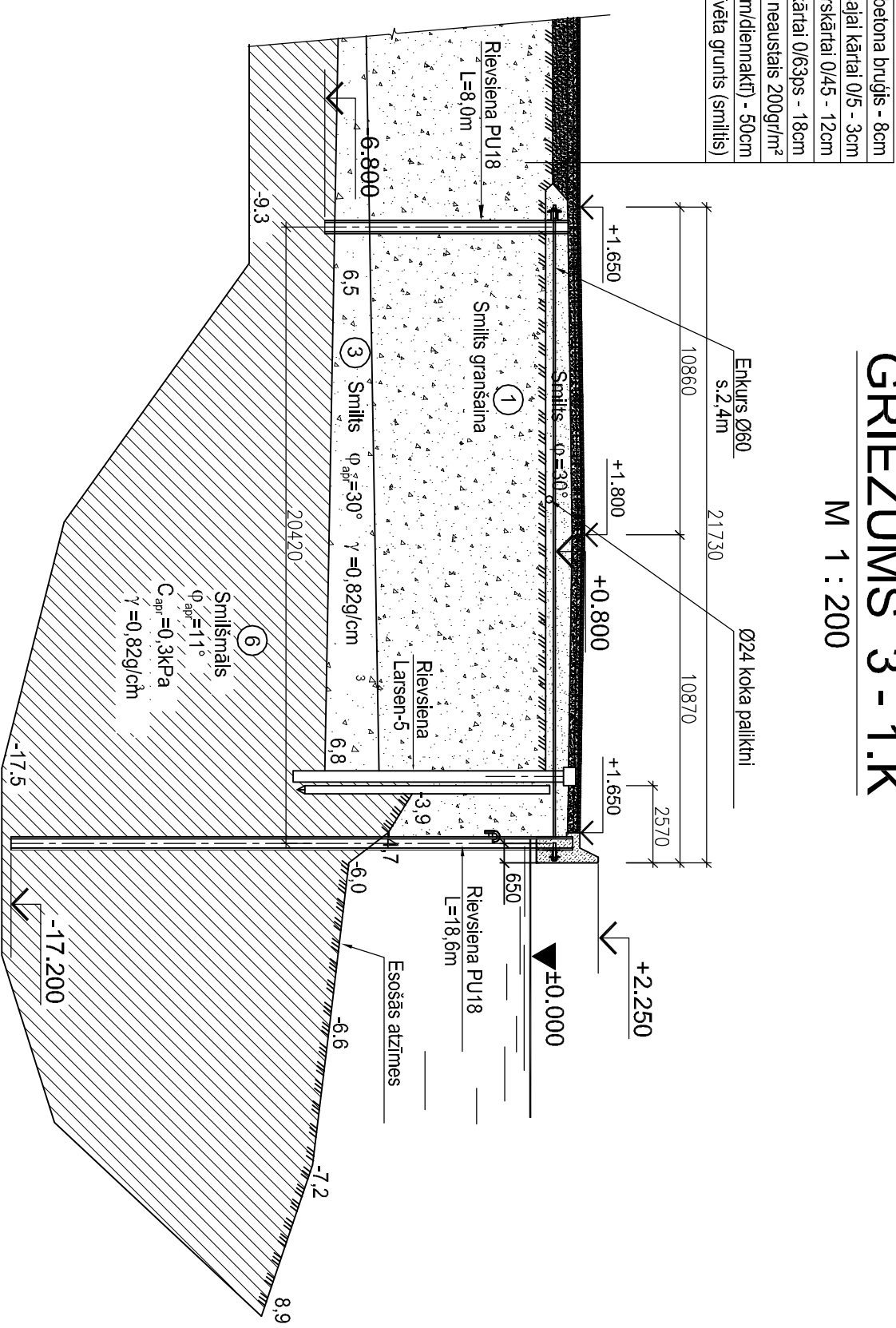
M 1 : 200



Rietumu mols

GRIEZUMS 3 - 1.K

M 1 : 200



Piezīme:

1. Griezumu izvietojums dots lapās HR1A-3, ĢP1A-3.

[illegible]